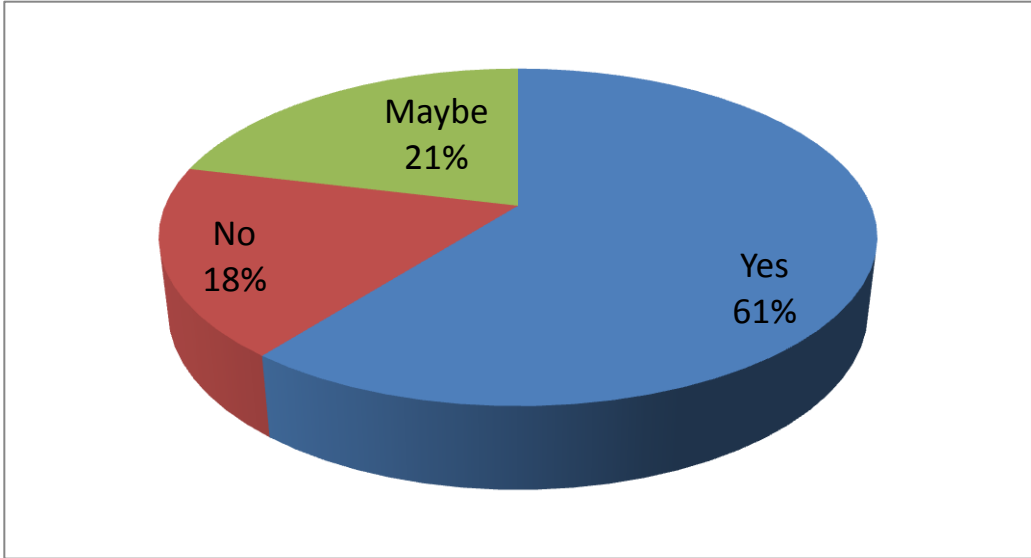
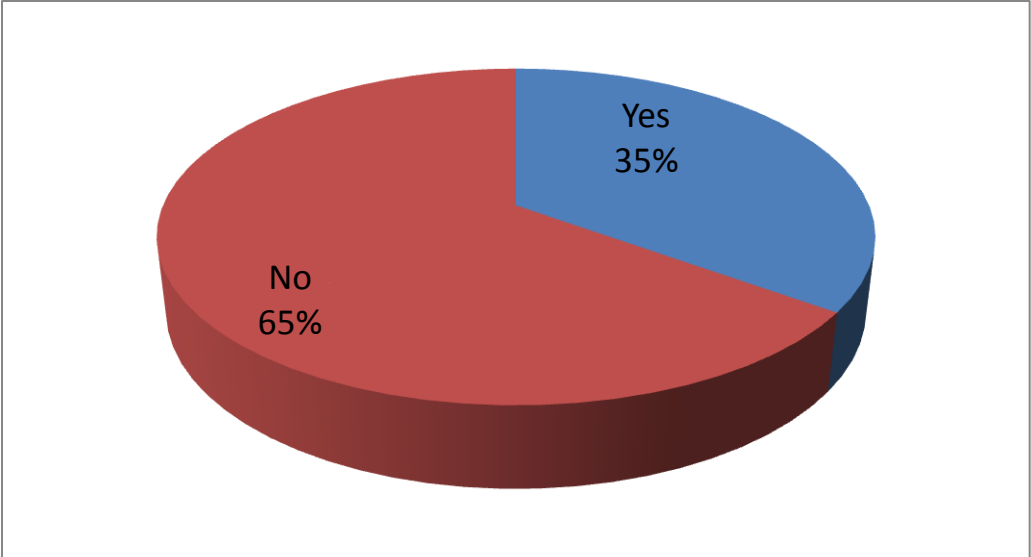


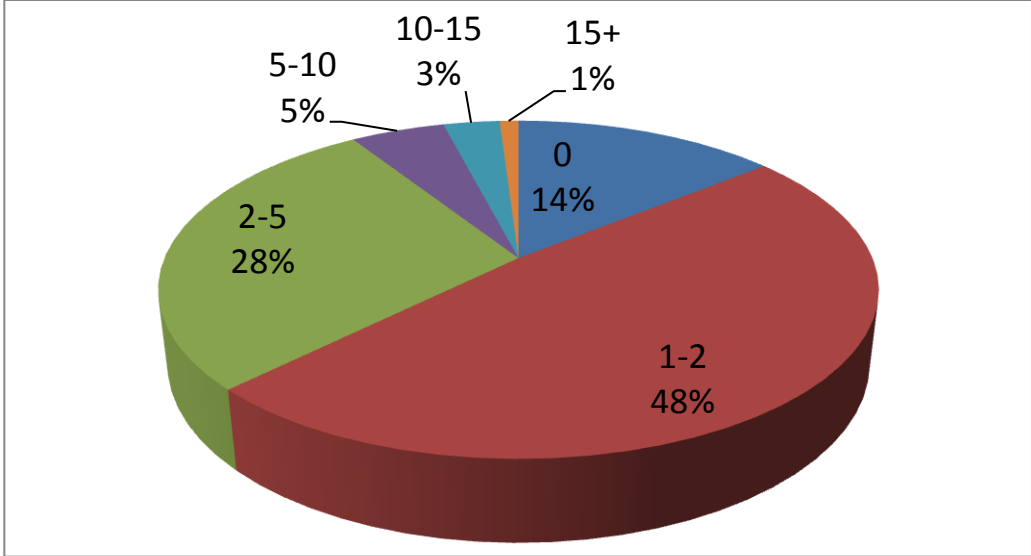
Would you plan to attend a member conference in February 2011?



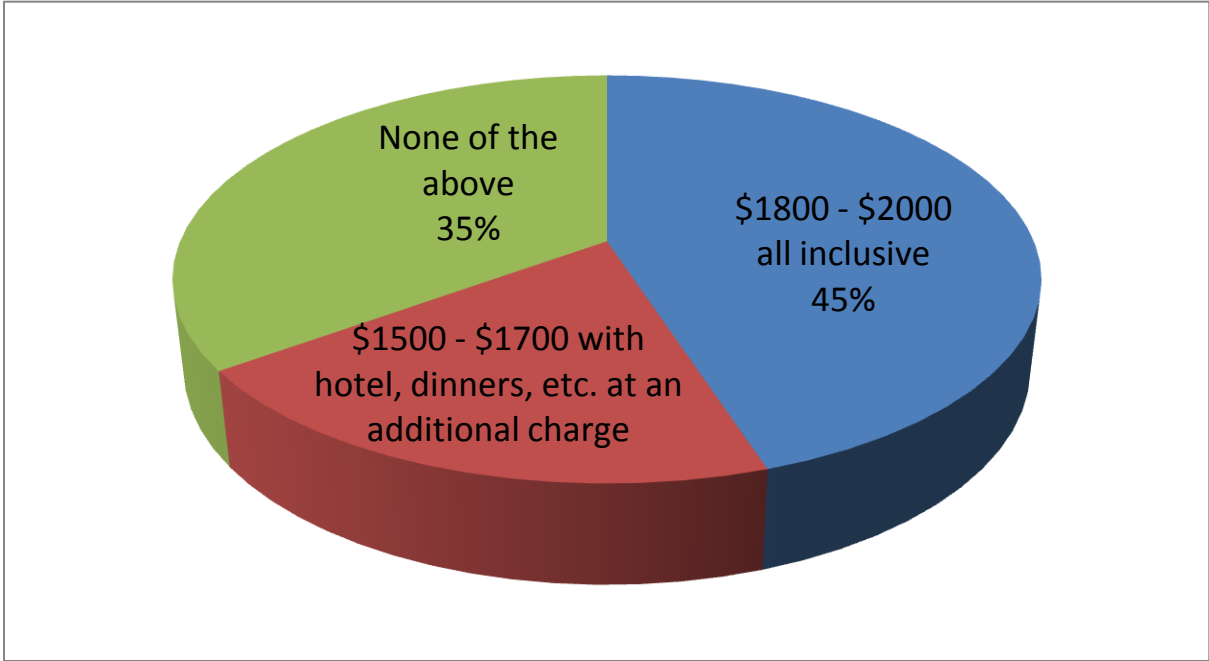
Would you (& your members) be more likely to attend this event in 2012, as opposed to 2011?



How many of your members do you think would be interested in attending



Assuming we locate a first class location, obtain a nationally recognized speaker and develop an agenda packed with relevant educational topics, please confirm which of the pricing options below is most appropriate.



If you selected 'None of the above' in question 4 please provide your suggestion of what can be reduced or eliminated in order to make the price/value equation reasonable.

